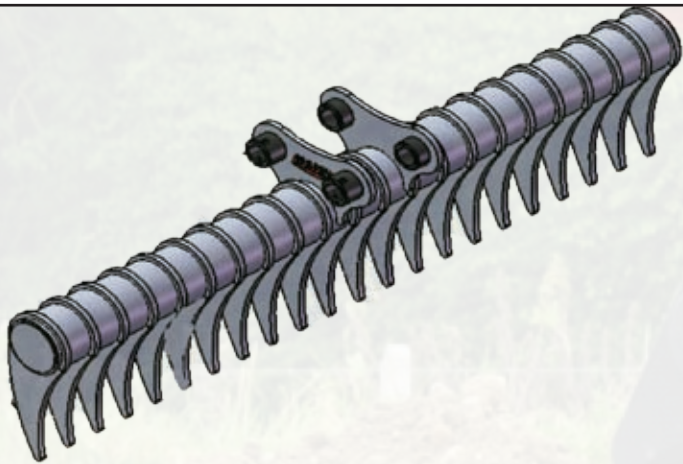


Hand Engineering's Lawn Rake

for Excavators up to 10 tonne



**HIGH QUALITY.
LONG TERM PERFORMANCE.**

Hand Engineering's Lawn Rake has been reviewed by Customers as an 'Excellent Practical Rake'.

Used to sort out debris or heavier material from soil.

It has proven to be invaluable to landscapers in the preparation of lawns for reseeded.

SPECIFICATIONS

Available for any make or model of micro and mini excavator up to 10 tonnes operating weight.

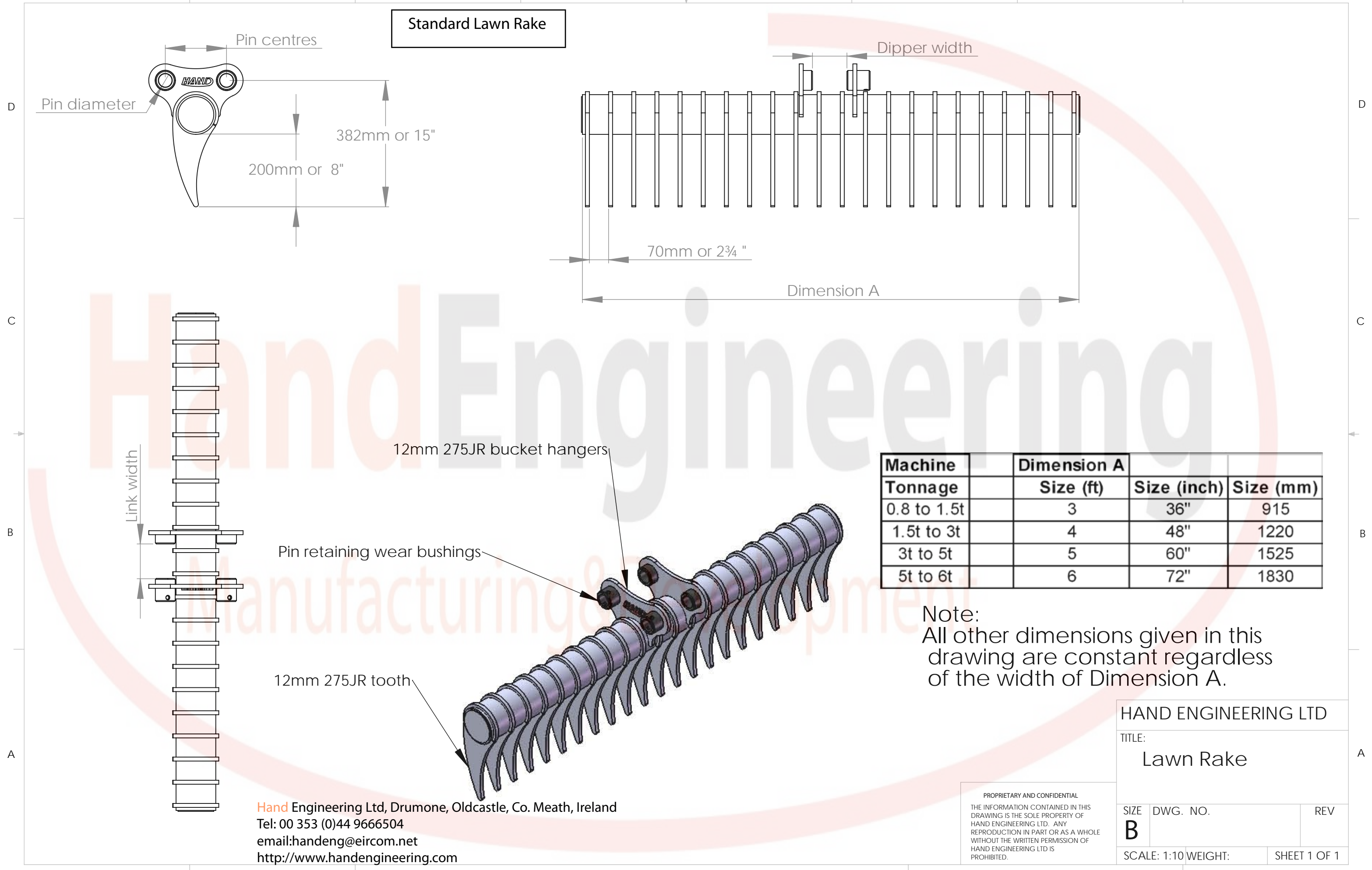
FEATURES

- > Strong and Durable
- > Constructed of high grade wear resistant material
- > One Year guarantee
- > Available in varying widths to suit different job applications
- > Standard and Hydraulic Tilting Lawn Rake available.
- > High Quality and Cost Effective

Hand Engineering Ltd.,
Drumone, Oldcastle,
Co. Meath, Ireland
Tel: 00 353 (0)44 9666504
email: handeng@eircom.net
<http://www.handengineering.com>

HandEngineering
Manufacturing&Development

Standard Lawn Rake



Machine	Dimension A		
Tonnage	Size (ft)	Size (inch)	Size (mm)
0.8 to 1.5t	3	36"	915
1.5t to 3t	4	48"	1220
3t to 5t	5	60"	1525
5t to 6t	6	72"	1830

Note:
All other dimensions given in this drawing are constant regardless of the width of Dimension A.

Hand Engineering Ltd, Drumone, Oldcastle, Co. Meath, Ireland
 Tel: 00 353 (0)44 9666504
 email:handeng@eircom.net
 http://www.handengineering.com

PROPRIETARY AND CONFIDENTIAL
 THE INFORMATION CONTAINED IN THIS DRAWING IS THE SOLE PROPERTY OF HAND ENGINEERING LTD. ANY REPRODUCTION IN PART OR AS A WHOLE WITHOUT THE WRITTEN PERMISSION OF HAND ENGINEERING LTD IS PROHIBITED.

HAND ENGINEERING LTD		
TITLE: Lawn Rake		
SIZE B	DWG. NO.	REV
SCALE: 1:10 WEIGHT:		SHEET 1 OF 1