

**EFFICIENT
PRODUCTIVE
SENSITIVE
GUARANTEE**

The Falcon F40 is an efficient workhorse with a loading capacity of 4 tonnes and a crane reach of 5.3 metres. It has a proven 48hp (36.4kw) engine resulting in plenty of power and torque. Combined with 500mm wide flotation tyres for minimal ground impact, it is even suitable for the most sensitive of sites.

You can efficiently manage log extraction and keep down production costs with this economical purpose built machine.

With a variety of extras available you can choose the features that suit your needs.

We offer a one year parts and labour guarantee.



Dromone
Oldcastle,
Co.Meath,
Ireland
ph + 353 (0) 44 9666919
email:info@falconforwarder.com
www.falconforwarder.com



F40





specifically designed for you

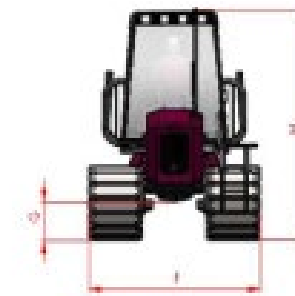
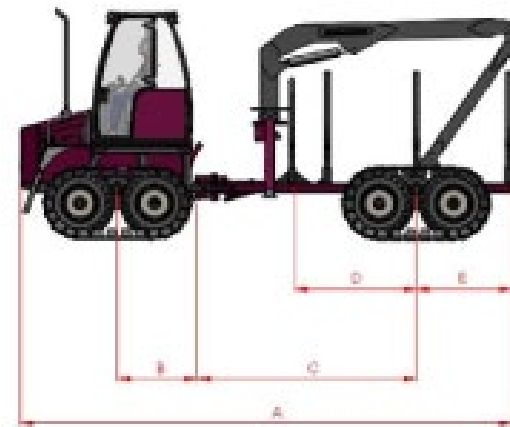
The Falcon F40 has been specifically designed for use on small to medium plantations. The F40 provides the benefit of low impact extraction making it the optimum choice for 'sensitive' sites or those which have difficult ground conditions. This is a powerful reliable machine with low impact terrain capabilities allowing you to manage your plantation in an environmentally and productive manner.

technical specification

Falcon Model	F40
Engine	Kohler KDI2504M
4 stroke diesel with cylinder in line	•
Cylinder	4
Bore (mm)	88
Stroke (mm)	102
Engine displ (cm3)	2482
DI	DI
Injection Equipment	Mech-Rotary pump
Emission compliance	STAGE III A
Max power (IFN - ISO 3046 and ISO 14396)	36.4@2600 (STAGE III A)
(kW@rpm)	41@2800 (TIER 2)
Hp(kW)	48(36)
Max torque (IFN - ISO 3046 and ISO 14396) (Nm@rpm)	170@1500
Low-end torque (Nm@1000 rpm)	110
Best point (g/kWh)	220
Max power (g/kWh@2600)	234
Transmission	Variable hydraulic (2 speed)
Power	12 V,60A
Crane	Farma 5.3
Max Crane Reach (Mtr)	5.3
Lifting capacity at 5m	300KG
Seat Rotation (degrees)	180
Hydraulic System	Poclairn Hydraulics
Number of Wheels	8
Tyre Type	500/50x17 BKT
Axle Type	Bogie Axle
Ground Clearance	550mm

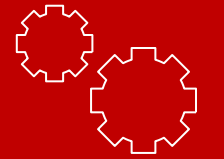
TECHNOLOGY THAT YOU CAN AFFORD.

The F40 is more productive, on smaller to medium plantations, than traditionally used harvesting systems. It provides the benefits of low impact extraction with greater ground clearance (>50cm). Capable of carrying up to 4 tonnes per journey it provides owners or groups the operational capacity to manage their own plantations. It is more easily portable, than larger forwarders or agricultural trailers, between sites reducing transport costs. The optional extras available allow it to become a multi-functional vehicle when required. The Falcon F40 is competitively priced, productive and designed with due regard to environmentally 'sensitive' sites.

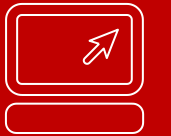


dimensions & weight

Length (A)	6600mm
Wheel Base (B+C)	4015mm
Bogie centre - Middle Joint (B)	1075 mm
Middle joint - Bogie centre (C)	2940 mm
Headboard - Bogie centre (D)	1634 mm
Bogie centre - Rear (E)	1288 mm
Width - 500 Series tires (F) With Track	2310 mm
Ground clearance (G)	513 mm
Transport height (H)	3080 mm
Unladen Weight	3.95 ton
Max. Laden Weight	8 ton
Load Space Capacity	6.25 m ³
Pay Load	4 ton



Falcon provides a backup and support service to all our customers. Your business is our business.



email: info@falconforwarder.com
web: www.falconforwarder.com

OPTIONAL EXTRAS

- TIPPING TRAILER.
- CLAMSHELL BUCKET.
- TOWING HITCH.
- HYDRAULIC WINCH.

STANDARD FEATURES

- STEEL TRACK SYSTEM.
- PROVISION FOR BOX BODY.
- TOOLBOX WITH LOCK.
- LED ROOF LIGHTS.
- CAB HEATER.
- WHEEL VALVE PROTECTION CAPS.

